

MG100 SERIES GIGABIT CONVERTER 100BASE-T TO 100BASE-SX/LX

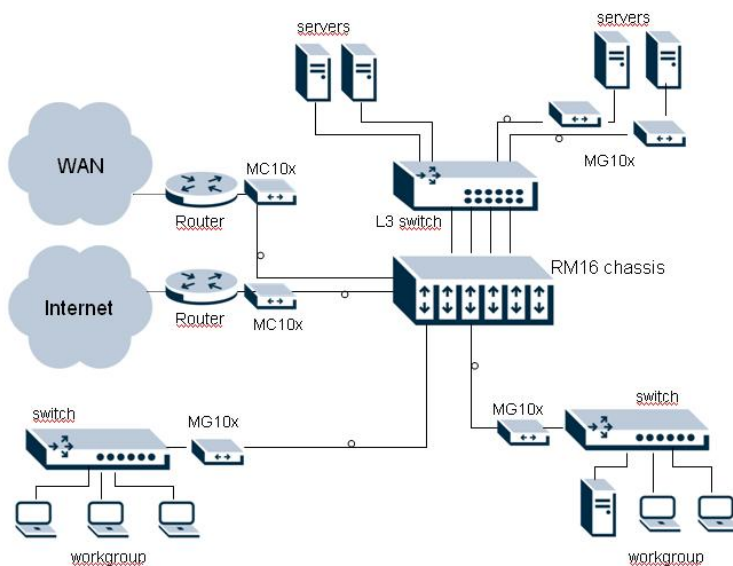
MG100 Series Converter is designed to work as stand alone or to fit into a series of RM16 Chassis . This stand alone converter adapts the emerging MG100 technology and is able to expand a copper based network from 550m up to 80km through a dual fiber. MG100 series is fully compliant with IEEE802.3, 802.3u and 802.3ab standards. The installation & operation procedures of the MG100 series is simple & straightforward. Diagnostic LEDs located in the front panel indicate the real time operating status.

KEY FEATURES

- > IEEE 802.3 10Base-T, 802.3u 100Base-TX, 802.3ab 1000Base-TX and FX Standard
- > Conform to 10Base-T, 100Base-Tx, 1000Base-T and 1000Base-Sx/Lx/Zx specifications
- > Fibre port supports Multi-mode, Single-mode, SC, FC and MT-RJ connectors
- > UTP port supports 10/100/1000 and Half/Full-Duplex Auto-negotiation
- > Store and Forward Switching mechanism
- > Auto-Cross over for MDI/MDIX in TP port
- > Support 4K MAC address
- > Support 256K Byte Packet Buffer
- > LED indication: SPD, FRX, FDX, TRX, POW.



APPLICATION



MG100 SERIES

GIGABIT CONVERTER 1000BASE-T TO 1000BASE-SX/LX

TECHNICAL HIGHLIGHTS

SPECIFICATION

- > IEEE 802.3y 10Base-T
 - > IEEE 802.3u 100Base-TX
 - > IEEE 802.3ab 1000Base-T
 - > 1 x 10/10/1000Base-T - RJ45 interface
 - > 1 x 1000Base-LX - Duplex SC
 - > LED: SPD, FRX, FDX TRX, POW
 - > Power Supply: 110/240 Vac - 50/60 Hz , 12 Vdc - 4,2 W
 - > MAC address entries: 4.000 Entries
 - > Memory Buffer: 256 Kbytes
 - > Forward/Filter Rate: 14.880/148.800/1.488.000 pps
-
- > Environment
 - Operation temperature: 5° ~ 45° C
 - Storage temperature: -40° ~ 85° C
 - Humidity: 5% ~ 90% (non-condensante)
-
- > Emission/Safety: FCC Class A, CE

DIMENSION

- > Dimension: 118 x 138 x 30mm (W x D x H)
- > Shipping weight: 0,6 Kg

TYPICAL OPTICAL POWER BUDGET

TYPE	MG101	MG102	MG103	MG104	MG105	MG106	MG107	MG108
Connector	SC duplex	SC duplex	SC duplex	SC duplex	SC duplex	SC duplex	SC duplex	SC duplex
Wavelength	850 nm	1310 nm	1310 nm	1310 nm	1550 nm	1550 nm	1550 nm	1310 nm
Typical Distance	550 mt	10km	30km	40km	60km	80km	120km	2 km (MM) 10 km (SM)
Min TX power	-9,5 dBm	-9,0 dBm	-5,0 dBm					-9,5 dBm -9,0 dBm
Max TX power	-4,0 dBm	-3,0 dBm	0,0 dBm					-4,0 dBm -3,0 dBm
Sensitivity	-18,0 dBm	-21,0 dBm	-24,0 dBm					-18,0 dBm -21,0 dBm
Link budget	8,5 dB	12,0 dB	19,0 dB					8,5 dB 12,0 dB

ORDER INFORMATION

- MG101 1000T to 1000BaseSX - 550 mt. switching converter (Multi-mode SC conn.)
- MG102 1000T to 1000BaseLX - 10 km. switching converter (Single-mode SC conn.)
- MG103 1000T to 1000BaseLX - 25 km. switching converter (Single-mode SC conn.)
- MG104 1000T to 1000BaseLX - 40 km. switching converter (Single-mode SC conn.)
- MG105 1000T to 1000BaseLX - 60 km. switching converter (Single-mode SC conn.)
- MG106 1000T to 1000BaseLX - 80 km. switching converter (Single-mode SC conn.)
- MG107 1000T to 1000BaseLX - 120 km. switching converter (Single-mode SC conn.)
- MG108 1000SX to 1000BaseLX - Multi-mode to Single-mode 10 km. switching converter (Multi-mode and Single-mode SC connector)
- RM16 Media Converter Centre 16 slots chassis 19" - 2U with redundant Power Supply

Disclaimer

All statements, technical information and recommendations contained in this documentation have been carefully checked for reliability; however no responsibility is assumed for inaccuracies. The information contained in this documentation is subject to change without notice.